

Has your school recruited an Early Career Teacher to start in September 2023?



All ECTs must be signed up for an Induction Assessment Programme as well as an ECF Training Programme. Follow our easy sign-up process to be ready to welcome your ECTs in September 2023

SIGN UP PROCESS

Register your ECT with the Appropriate Body for their induction assessment programme

Whether an ECT is just starting their two-year induction programme or transferring from another school, they must be registered with an Appropriate Body by their school for their statutory assessment induction programme.

The role of the Appropriate Body is to:

- Register ECTs with the Teaching Regulation Agency
- Monitor the support Early Career Teachers receive
- Monitor assessment points

HISP Teaching School Hub is an Appropriate Body. Register your ECT with us via [this link](#) or scan the QR code:

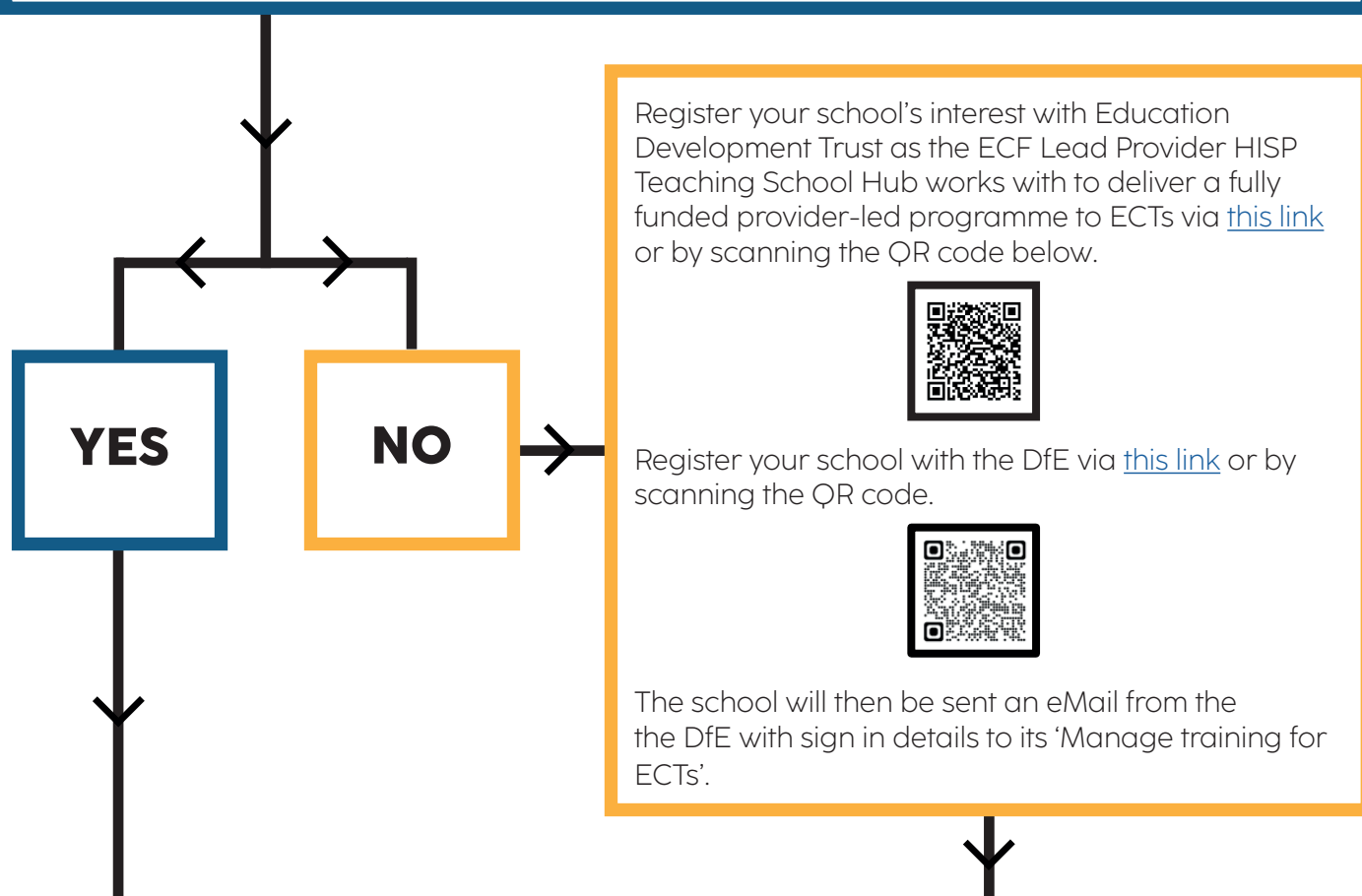
If you are moving ECTs from another AB, please inform them of your intention to change AB giving the names of the ECTs that you wish to move.



SCAN ME

Register your ECT for an ECF Training Programme

Does your school already have ECTs and work with HISP Teaching School Hub and Education Development Trust?



Register your new ECTs on the DfE Portal.

If your Induction Tutor has changed, please update this first. Please ensure that you link all ECTs to a specific mentor name. If you are moving to work with us from another provider you will need to indicate this when asked.

To complete this step, you will need to have decided the ECF route that you are offering your ECT. You can choose from:

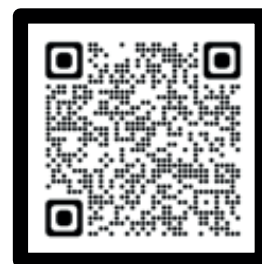
- a fully funded provider-led programme;
- using DfE-accredited materials to deliver your own ECF induction
- designing your own ECF induction.

Please find more information about the options here or contact ecf@hispmat.org to discuss further.

Before Leaving the DfE portal, please review that all is correct by clicking on 'Manage Mentors and ECTs' and then clicking on each name. If you are changing your AB for your 2022-2023 cohort, you will need to click on each ECT and update the AB to HISPTSH.

Once complete, the DfE performs validation checks and passes details to the Lead Provider, Education Development Trust who will then liaise with HISP Teaching School Hub as its delivery partner.

EDT will issue log in details once these checks have taken place.



Need support with registrations, please contact HISP Teaching School Hub

ecf@hispmat.org