

# Has your school recruited an Early Career Teacher to start in April 2024?



All ECTs must be signed up for an Induction Assessment Programme as well as an ECF Training Programme. Follow our easy sign-up process to be ready to welcome your ECTs in April 2024

## SIGN UP PROCESS

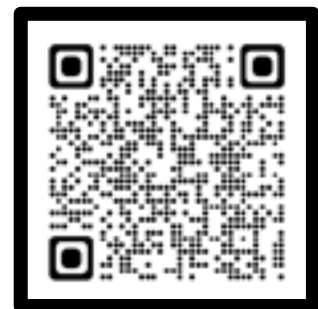
Register your ECT with the Appropriate Body for their induction assessment programme

Whether an ECT is just starting their two-year induction programme or transferring from another school, they must be registered with an Appropriate Body by their school for their statutory assessment induction programme.

The role of the Appropriate Body is to:

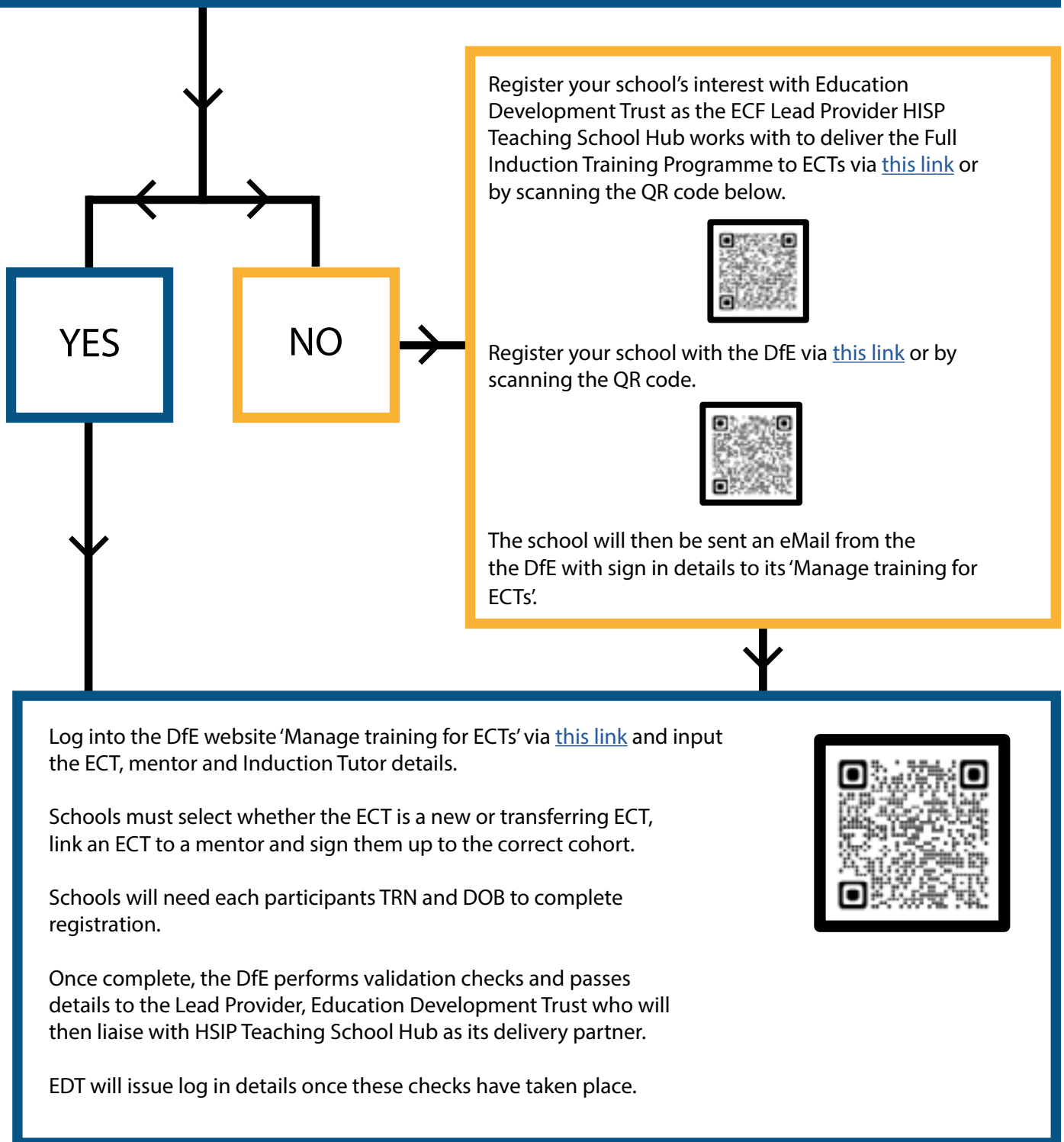
- Register ECTs with the Teaching Regulation Agency
- Monitor the support Early Career Teachers receive
- Monitor assessment points

HISP Teaching School Hub is an Appropriate Body. Register your ECT with us via [this link](#) or scan the QR code:



## Register your ECT for an ECF Full Induction Training Programme

Does your school already have ECTs and work with HISP Teaching School Hub and Education Development Trust?



Need support with registrations, please contact HISP Teaching School Hub

ab@hisptsh.org  
ecf@hisptsh.org